

# **NEXT Mobile Video Tracking**



**\*Your vehicle picks up unwanted passengers from alongside the road \* you can't view live footage while your vehicle going cross border \*fuel is illegally siphoned from your vehicles \*transported goods arrive at the destination damaged or missing \*your vehicle is involved in an accident which was not the fault of your driver or was due to some action of the driver prior to the accident \* calls are received from the public regarding a road incident or the way the driver is driving \*you battle to get hold of your driver on his cell or radio \*your vehicle is delayed for an unexpected period of time and the reason is unknown.....**

## **New Generation of Hybrid HDD SD Card Mobile DVR**

4/8 Channels MDVR

Built-in G-sensor + GPS + 3G/4G + Wi-Fi 5.8 Ghz



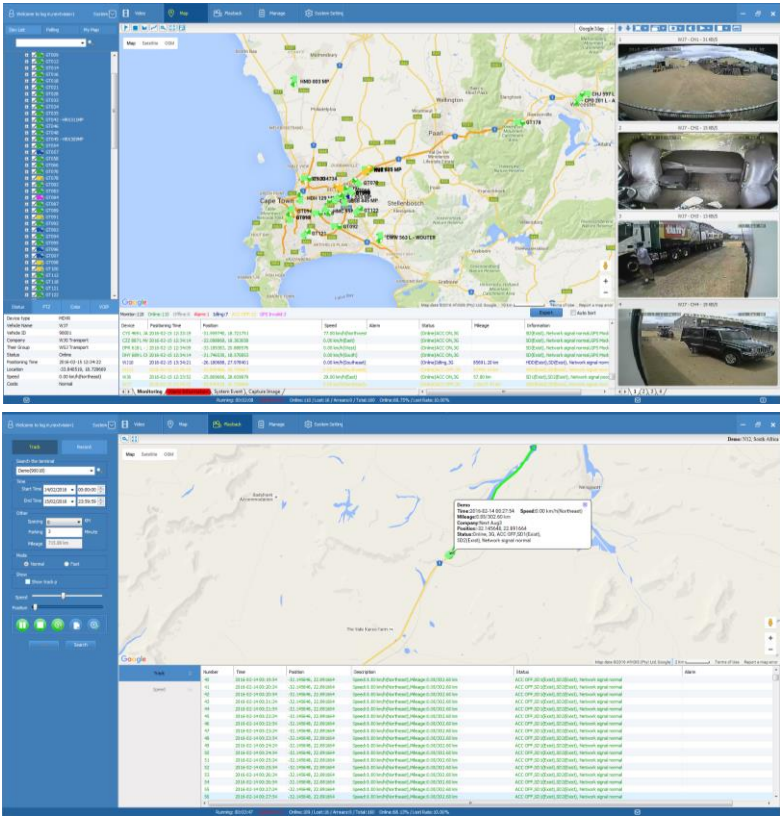
# Product Introduction

Mobile DVR (with 3G, 4G, GPS, Wi-Fi) Real-Time monitoring, for vehicle monitoring in truck, bus, police car, cash & transit, tanker truck, escort security vehicles etc. Operated with Intelligent Vehicle Monitoring System to enable fleet management online, and achieve a full range of vehicle monitoring functions such as Real-Time video, audio monitoring, GPS tracking, GEO-Fence, voice intercom, event alarms, driving route record, Text to Speech, PTZ control, anti-fuel theft and anti-hijack.

Our Intelligent Vehicles Monitoring Software is also accessible on Smart Devices such as Apple & Android.



# Intelligent Vehicle Monitoring System



## Features

- 100,000 vehicles Real-Time monitoring fleet management
- Real-time video & audio monitoring
- Real-time complete information of vehicle status, such as numbers of online vehicle, speed, GPS tracking, vehicle temperature, alarms etc.
- Video remote search & download
- Picture snapshot
- PTZ control
- Driving-route record
- Alarm linkage. (Emergency alarm, video signal lost alarm, door open alarm, hard disk error alarm, over speed / low speed alarm, idling too long alarm, temperature alarm, GPS fail alarm and other user-defined alarms are triggered to activate alarm respond e.g. map locking, alarm call, video window automatically popup, and video recording & saved on CMSV6 platform. )
- Auto-generating report forms, can be directly exported to Excel version for further analysis
- Real-time monitoring via personal mobile devices with iPhone, Android, iPad system

# Mobile DVR



## Features

- High definition real-time recording with 4/8 x 720P AHD cameras IPC:12V power supply
- Synchronized 4/8 channels video & 2 channels audio recording and playback
- 4/8 channels 720P Full frame recording, support HDMI and CVBS video out
- Dual SD Card & Dual Sim Card, excellent shock absorption design
- Build-in G-sensor module and GPS module , 3G/4G module、 WiFi module(optional)
- Built-in 1 SD card slot for data backup in case of hard disk drive error(need with 3G/4G module) Support 1\*RS485 and 2\*RS232 extend
- 8 seconds delay power-off for data protection
- Support hard disk automatic heating, Operating temperature - 40°C ~ +80°C
- 8V-36V wide voltage power supply, support POE.
- Dimension(L×W×H): 192×184×61 mm

## Benefits

- Reduce Risks
- Improve Insurance loss Ratios
- Real-time Alerts – Control room / Smart Phone
- Vehicle Tracking
- Real time Video Streaming
- Smart Phone App

# SPECIFICATIONS

Function		Performance
System	Language	/ English
	Operation Interface	Graphical menu operation interface (OSD menu)
	Password security	Permissions setting of administrator & user
Video	Video input	4/8 channels (support AHD camera)
	Video output	2 channel (1 as $\phi$ 3.5 Phone Jack, 1 at 24pin connector)
	Video display	Single picture, 4 pictures
	Signal system	PAL / NTSC
	Image compression	H.264 Main profile
Audio	Audio input	4 channels
	Audio output	2 channel (1 as $\phi$ 3.5 Phone Jack, 1 in the 24pin connector)
	Record format	Synchronized video & audio recording
Recording & Storage	Image resolution	4/8 x 720P AHD or 4/8 x 960H or 4/8 x D1 or 4/8 x CIF
	Video coding	ISO14496-10
	Video bit rate	CIF: 1536Kbps ~ 128Kbps, 960H: 2048Kbps ~ 400Kbps, D1: 2048Kbps ~ 400Kbps, 8 grades of image quality optional, Grade1 as best, Grade8 as lowest
	Audio bit rate	8KB/s
	Storage	1 / 2 SD card storage optional, up to 128 GB / card
Alarm	Alarm input	8 channels, alarm activated by low voltage (<1V) & high voltage (>5V)
	Alarm output	1 channel, 12V output
Communication Ports	RS485	RS485 x 1
	RS232	RS232 x 2
	RJ 45 network	RJ45 X 1, for external Wi-Fi module or IPC
GPS	Built-in GPS module. Real-time geographic coordinates, speed information	
G-Sensor	Built-in G-Sensor	
Wireless Communication	3G	Built-in 3G (HSUPA / HSDPA / WCDMA / EVDO / TD-SCDMA) module optional
	4G	Built-in 4G(TDD-LTE / FDD-LTE) module optional
	Wi-Fi	Built-in Wi-Fi( 2.4 / 5.8 Ghz) optional
Software	PC playback	Video files playback in PC with analysis of the vehicle status
	CMSV6 / IVMS	Wireless real-time video & audio monitoring, GPS, alarm, etc.
Software Upgrade	Upgrade through SD card	